



OPTION PARTS

PIÈCES D'OPTION • OPTIONSTEILE
• OPTIE ONDERDELEN



Version: 07-05-2021

www.corally.com

OPTION PARTS - PIÈCES D'OPTION - OPTIONSTEILE - OPTIES



Fit with C-00180-144-2
C-00180-039
Steering Ball Cups - Composite - 1 set



Fit with C-00180-143-2
C-00180-041
Rear Camber Ball Cups - Outer - Inner - 1 set



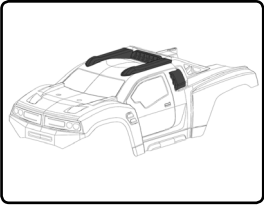
Adjustable Steering Links
Fit with C-00180-039
C-00180-143-2
Turnbuckle - M5 - 92mm - Spring Steel - 2 pcs



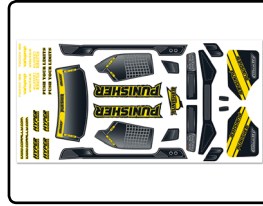
Adjustable Rear Camber Links
Fit with C-00180-041
C-00180-144-2
Turnbuckle - M4 - 92mm - Spring Steel - 2 pcs



C-00180-224
Fan Holder - Composite - 1 set



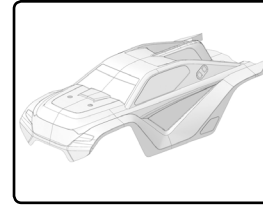
C-00180-389
Polycarbonate Body - PUNISHER XP 6S - Clear - Cut



C-00180-388-1
Body Decal - PUNISHER XP 6S - 1 pc



C-00180-379
Painted Body - MT KRONOS RTR - 1 pc



C-00180-380
Clear Body - KRONOS Monster Truck - 1 pc



C-00180-380-1
Body Decal - KRONOS XP 6S - 1 pc



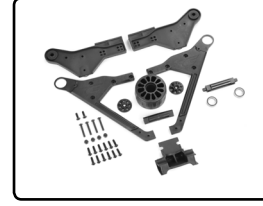
C-00180-316
Shock Cap - Lower - Aluminium - 2 pcs



C-00180-346
CVD Drive Shaft - Long - Rear - Wide Blocks - 1 pc



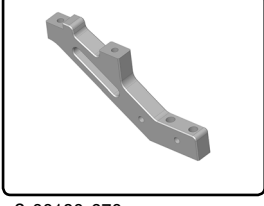
C-00180-378
MT - Racing Tires Glued on Rims - 2 pcs



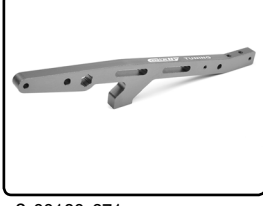
C-00180-567
Wheelie Bar 2021 - 1 Wheel version - Complete Set



C-00180-679
Steering Deck Holder - XTR - Aluminium - Black - 1 Pc



C-00180-670
Chassis Brace - XTR - Front - Aluminium - Titanium - 1 Pc



C-00180-671
Chassis Brace - XTR - Rear - Aluminium - Titanium - 1 Pc



C-00180-672
Arm Holder - XTR - Upper - Front - Aluminium - Titanium - 1 Pc



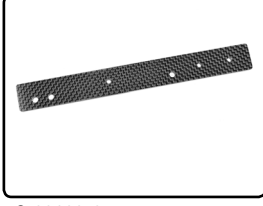
C-00180-674
Shock Tower - XTR - Front - 7075 Aluminium - 5mm - Black - 1 Pc



C-00180-675
Chassis Stiffener - XTR - Center - Graphite 3mm - 1 Pc



C-00180-676
Shock Tower - MTL - Rear - 7075 Aluminium - 5mm - Black - 1 Pc



C-00180-677
Chassis Stiffener Sheet - XTR - Rear - Graphite 3mm - 1 Pc



C-00180-368-X
PRO Drive Axle - Long - Rear - Swiss Spring Steel - 2 pcs



Fit with C-00180-369-1
C-00180-153-X
PRO Diff. Outdrive Cup - Swiss Spring Steel - 2 pcs



Fit with C-00180-153-X
C-00180-369-1
Dogbones - 93mm - 2021 Model - Steel - 2 pcs



C-00180-154-X
PRO Center Diff. Outdrive Cup - Swiss Spring Steel - 2 pcs



C-00180-155-X
PRO Pinion Outdrive Cup - Swiss Spring Steel - 2 pcs



Aluminium 7075 Hard Anodised
C-00180-410
Xtreme Diff Case - 30mm - FR / RE - Made in Italy - 1 pc



Aluminium 7075 Hard Anodised
C-00180-411
Xtreme Diff Case - 35mm - CENTRE - Made in Italy - 1 pc



Swiss Made 7075 T6
C-00180-387-2
Chassis Brace V2 - Front - Hard Anodised - Black



Swiss Made 7075 T6
C-00180-397-2
Chassis Brace V2 - Rear - Hard Anodised - Black



Swiss Made 7075 T6 Made in Italy
C-00180-680
Suspension Arm Mount - RR - 3mm - Hard Anodised - Black



Swiss Made 7075 T6 Made in Italy
C-00180-681
Suspension Arm Mount - RF - 3mm - Hard Anodised - Black



Swiss Made 7075 T6 Made in Italy
C-00180-682
Suspension Arm Mount - FR - 3mm - Hard Anodised - Black



Swiss Made 7075 T6 Made in Italy
C-00180-683
Suspension Arm Mount - FF - 3mm - Hard Anodised - Black

**Aluminium 7075 - Swiss Made
Made in Italy**



C-00180-678
Chassis LWB - 7075 T6 - 3mm -
Hard Anodised - Black

**Swiss Made 7075 T6
Made in Italy**



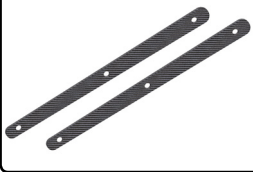
C-00180-420
Shock Tower - Front - 5mm -
Hard Anodised - Black

**Swiss Made 7075 T6
Made in Italy**



C-00180-422
Shock Tower - Rear - 5mm -
Hard Anodised - Black

Fits part C-00180-103



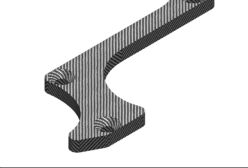
C-00180-256
Chassis Brace Stiffener - Rear -
Graphite 2.5mm - 2 pcs

Fits part C-00180-105



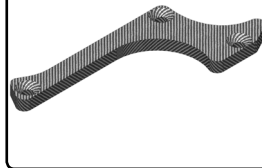
C-00180-257
Shock Stay Stiffener - Rear -
Graphite 2.5mm - 2 pcs

Graphite 3mm



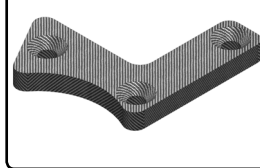
C-00180-232
Suspension arm stiffener - A -
Lower Front - Right - 1 pc

Graphite 3mm



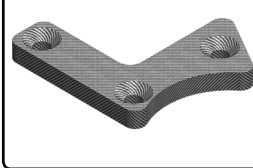
C-00180-233
Suspension arm stiffener - A -
Lower Front - Left - 1 pc

Graphite 3mm



C-00180-234
Suspension arm stiffener - B -
Lower Front - Right - 1 pc

Graphite 3mm

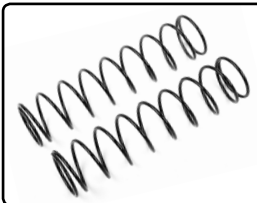


C-00180-235
Suspension arm stiffener - B -
Lower Front - Left - 1 pc

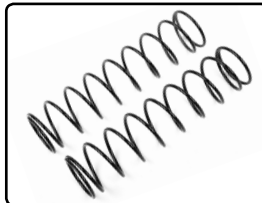
Fits part C-00180-104



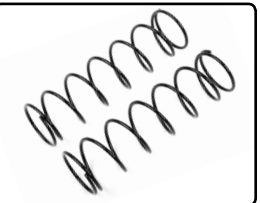
C-00180-255
Chassis Brace Stiffener - Front -
Graphite 2.5mm - 2 pcs



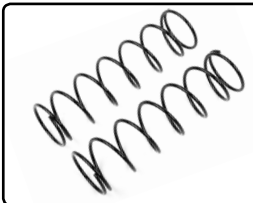
C-00180-286
Shock Spring - Soft - Rear -
2 pcs



C-00180-288
Shock Spring - Hard - Rear -
2 pcs



C-00180-289
Shock Spring - Soft - Front -
2 pcs



C-00180-291
Shock Spring - Hard - Front -
2 pcs



C-00180-157
Wing Washer - Lightened -
Aluminum - 2 pcs



C-52001
High Speed Servo - High Voltage -
Coreless Motor - Titanium Gear



C-52015
OC-27 HV Digital Servo - 5-8.4V -
IP-67 - Core DC Motor - Steel Gear



C-49145-X
Sport Racing 50C - 5400Mah - 4S -
14,8V - XT-90 - Hard Case



C-49146-X
Sport Racing 50C - 6700Mah - 4S -
14,8V - XT-90 - Hard Case



C-49164-X
Sport Racing 50C - 4500Mah - 6S -
22,2V - XT-90 - Hard Case



C-00180-399
Chassis Cover - Polycarbonate -
Clear - Cut - 1 pc



M1.0 Pinion - Hardened Steel - Shaft Diameter 5mm

- C-72711 • 11 Teeth
- C-72712 • 12 Teeth
- C-72713 • 13 Teeth
- C-72714 • 14 Teeth
- C-72715 • 15 Teeth



Check the availability of option parts on the website www.corally.com

Visualisez la disponibilité des pièces d'option sur le site web www.coally.com

Sehen Sie sich die Verfügbarkeit von Optionteilen auf der Website www.corally.com an.

Controleer de beschikbaarheid van optieonderdelen op de website www.corally.com